

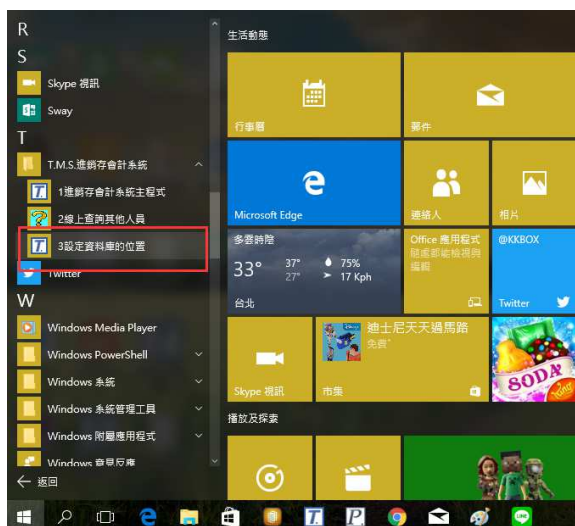
TMS 獲利王資料庫設定圖解

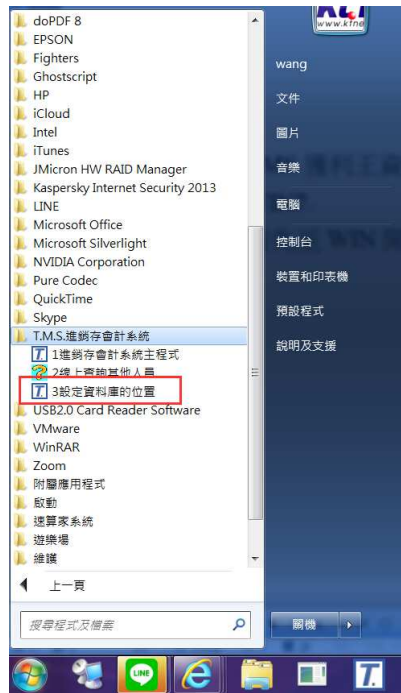
當貴司收到我司通知資料庫帳密請妥善保管，切勿開放。

T.M.S 獲利王用戶資料

公司名稱	TMS 獲利王
伺服器位置	IP (ex. 192.168.1.10) 實際 IP 以現場環境為主,請設為 內網固定 IP 211.75.71.76,21433 備用:123.240.187.243,21433
TMS 試通帳號	TMSDemo (需注意大小寫)
TMS 試通密碼	tms (需注意大小寫)
試通逾時	5
TMS 資料庫	TMSDemo1
使用者代號	tms
通行密碼	tms
網站網址	
網站管理後台	
電腦帳號	
電腦密碼	
資料庫管理者帳號	
資料庫管理者密碼	
資料庫備份位置	備份時間 每日 00 點,13 點,19 點, 關機也會自動備份 備份時間範圍 7 天

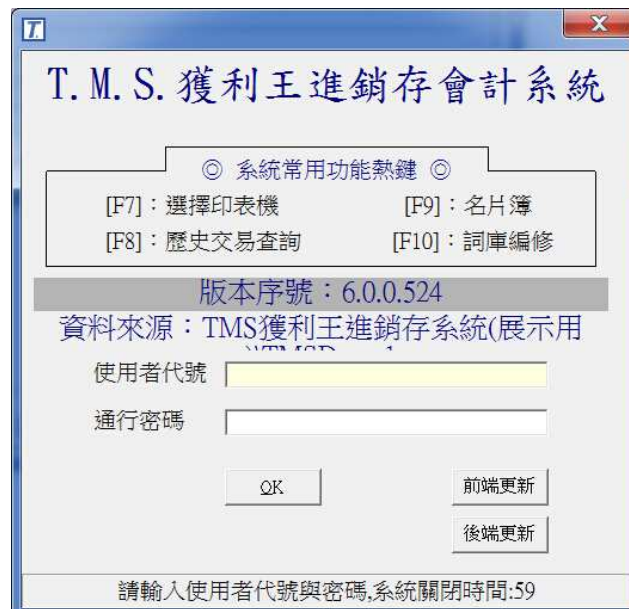
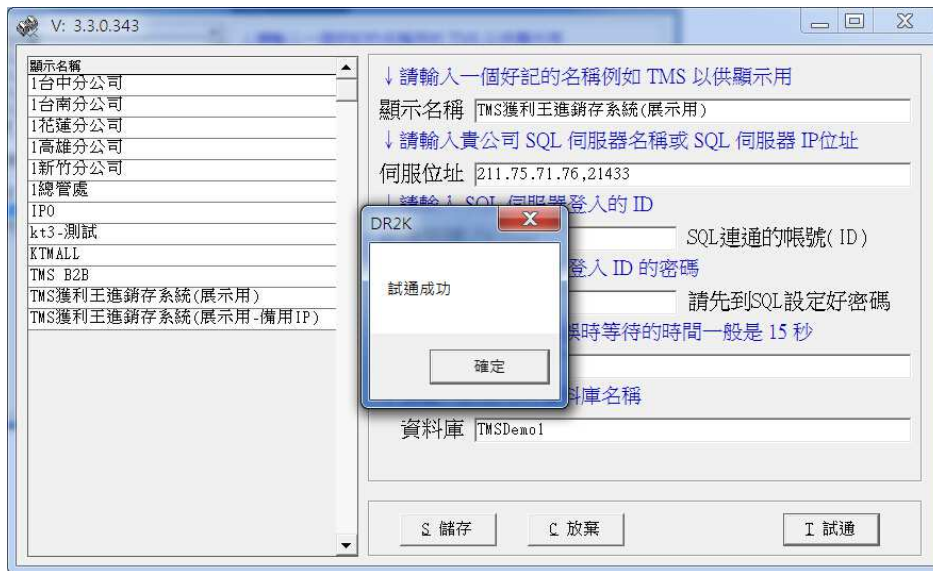
首先至 WIN 開始>所有程式(WIN10 則為所有應用程式)>TMS 進銷存會計系統>3 設定資料庫位置,點選即可





A screenshot of the TMS software configuration window, titled 'V: 3.3.0.343'. The window is divided into two main sections. On the left, there is a list of '顯示名稱' (Display Names) including '1台甲分公司', '1台南分公司', '1花蓮分公司', '1高雄分公司', '1新竹分公司', '1總管處', 'IPO', 'kt3-測試', 'KTMALL', 'TMS B2B', 'TMS獲利王進銷存系統(展示用)', and 'TMS獲利王進銷存系統(展示用-備用IP)'. On the right, there are several input fields and instructions: '顯示名稱' (with a note to enter a memorable name like TMS), '伺服器位址' (with a note to enter the SQL server name or IP), '試通帳號' (with a note to enter the SQL login ID), '試通密碼' (with a note to enter the SQL login password and a warning to set it first), '試通逾時' (with a note that the default is 15 seconds), and '資料庫' (with a note to enter the database name). At the bottom, there are three buttons: '儲存' (Save), '放棄' (Cancel), and '試通' (Test).

A screenshot of the TMS software configuration window, titled 'V: 3.3.0.343', showing the configuration completed. The '顯示名稱' list on the left is the same as in the previous screenshot. The right side of the window now has the following values filled in: '顯示名稱' is 'TMS獲利王進銷存系統(展示用)', '伺服器位址' is '211.75.71.76,21433', '試通帳號' is 'TMSDemo', '試通密碼' is '***', '試通逾時' is '5', and '資料庫' is 'TMSDemo!'. A red arrow points to the 'TMS獲利王進銷存系統(展示用-備用IP)' entry in the list, with the text '主機代管則請增設備用IP' (If hosted, please add a backup IP). At the bottom right, the text '輸入完畢試通' (Input complete, test) is displayed. The '試通' button is circled in red.



第一次啟用請『前端更新』後，登入即可開始啟用